

# St. Luke's

YOUTH  
PARENT  
HANDBOOK



## Introduction to Youth Ministry

### Knowing Serving Sharing

St. Luke's Youth Ministry welcomes all into a caring environment as we grow in faith to become active disciples of Christ through love and service.

We are a value based youth ministry. There are four Christian values that we hope our teenagers will know and embrace during their time at St. Luke's: welcoming, caring, faith growth, and love and service.

We hope they know what it means to be welcomed. To be welcomed is to immediately feel loved and cared for. Each person who comes is a special child of God with unique gifts.

We also pray that they know what it is to be cared for and that they learn to care for others. To love each other unconditionally is at the heart of caring. Whatever happens in life, everyone has a place to be where they won't be judged, but will be cared for.

Together we will learn about what God is doing in our lives and around the world. The life of faith is a journey. We will travel together as we figure out what God calls us to do and who God calls us to be.

Service and love are tied together because we can't have one without the other. We serve the world because Christ first loved us. To love someone is to serve

them, whether we have just met them or are life long friends.

These four values are our foundation. They guide all the stuff we do, and we do

### Inside:

Who SLYC is	2
Fall/Spring Schedule	3
Staff and Tartan Trot Info	5
Confirmation	6
Summer Trips	7

### What's inside?



# SLYM

Inside you will find a lot of information about St. Luke's Youth Ministry (SLYM). There are calendars, structural charts, FAQ's, info on where to go for the latest information, and much, much more. Please read it through. We are very busy and try to make things as easy as possible. We are always open to suggestions on how to make it easier for you to get plugged in and stay connected.

Making new friends in Honduras as we work side by side with a local village in the Agalta Valley.



## Meaning What?

### Here is how we define each value

- **Welcoming**

We affirm that everyone belongs to Christ. Therefore all belong at church. We will know each other by name as we make deep connections with one another.

- **Caring**

We embrace and connect with each other by sharing all of who we are and by praying for each other.

- **Faith Growth**

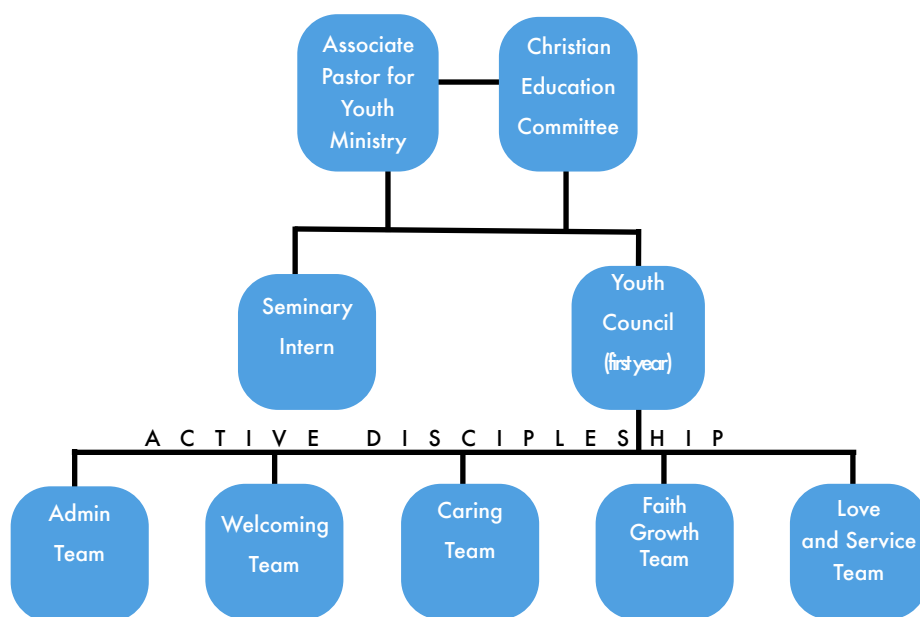
We seek to provide an environment where we all will learn and grow in faith, asking questions and figuring out God's call for who God wants us to be and what God wants us to do.

- **Love and Service**

We serve others by stretching out to people in need, building relationships of compassion. Jesus said the greatest commandment is to love one another. Love is patient, unconditional, uplifting, and selfless.

- **Administration**

We will provide efficient, loving, and empowering training, organization, and support for all youth ministry at St. Luke's Presbyterian Church.



## New Structure

So, here we are. This is what we look like now. Everything we do falls under one of four values. Welcoming, Caring, Faith Growth, and Love and Service. Each team needs people be part of its ministry. There are already people dreaming big for this year and they need your help. Every active person (adult and youth) can plug in somewhere in this new structure. Where do your gifts fit to help us?

## Where'd this come from?

In February 2009, a group of 8 youth and adults came together to start work on a new structure for SLYM. Over the course of a

year, they read a couple books, asked lots of questions, and worked really hard. You may remember a survey and a conversation or two about this. Really, it came from the entire St. Luke's community. This new structure and mission statement is what came from all the input. In February 2010, about 20 more people were added to the mix to help dream big about what it would look like for St. Luke's to be the best it could be at implementing the four values. They have been working really hard to put some tangible things into place.

## Our Mission

St. Luke's Youth Ministry welcomes all into a caring environment as we grow in faith to become active disciples of Christ through love and service.



September	October	November	December
4_Sunday off 5_Labor Day	2_Sunday School 9:30 _Youth Connect 5:30-7:30. 5_FEAST 3 7-9_MS Retreat at Calvin Center	1_Requiem for the homeless St. Philip's Cathedral (Buckhead) 2_FEAST 6	4_Happy B-Day Jesus (youth help) _Toys for Tots Service night out to dinner after. 7_FEAST 10 (large group evening)
11_Youth Pancake Breakfast for all church. Youth meet in Kitchen at 8:30AM _1:00-3:00 6th Grade pool party.	9_Sunday School 9:30 _Youth Connect 5:30-7:30 12_FEAST 4	6_Sunday School 9:30 _Youth Connect 5:30-7:30 9_FEAST 7	11_Sunday School 9:30 _WOW Service _Youth Connect 5:30-7:30
18_Sunday School 9:30AM _Youth and Parent Kick-off in great hall 5:30-7:30PM. Get all the info for the year ahead. 21_FEAST 1 5:45 dinner, 7:15 pickup	16_Sunday School 9:30 _WOW Sunday _Youth Connect 5:30-7:30 19_FEAST 5	13_Sunday School 9:30 _Youth Sing @ 11:00 _Dueling organs concert at church 5:00-6:15ish. _Youth Connection 6:30-8:00 (no dinner) 16_FEAST 8	18_Sunday School 9:30 _Youth Sing @ 11:00 _No Evening 19_Youth babysitting service for parents of younger children. 9:30-12:30am. _Live Nativity
25_Sunday School 9:30 _Youth Connect 5:30-7:30 28_FEAST 2	23_Sunday School 9:30 _Youth Sing @ 11:00 _HS @ Druid Hills Dinner _No youth choir practice _MS 5:30-7:30 @ Church 26_Trunk n' Treat 28_HS Fifth Quarter @DUMC end at 12:30am 30_Time and Talent Expo at Church _Parent Connect @ Church 5:30-7:30 _Youth Connect @ Church 5:30-7:30	20_Sunday School 9:30 _WOW service _Youth Connect 5:30-7:30 23_No FEAST 27_Sunday School 9:30 _No Youth Connect 30_FEAST Special evening with Stop Hunger Now	24_Christmas Eve services 25_No Youth Connect

## Fall Details

Sunday school is generally every week from 9:30-10:30AM. Brittany Harrold teaches the middle school class with a team. Phil Brown teaches the high school class with a different team. Grab some food and come on upstairs.

Sunday evenings are generally 5:30-7:30PM unless noted differently. We eat dinner and then have fun, games, serious stuff, and service stuff after dinner. This is a great place to bring friends and get energized for the week ahead.

W.O.W. Sundays are a time for the young people to worship in a different way. We start in the sanctuary at 11:00 then head to the chapel for a different way of worship.

Wednesday nights (FEAST for All) are a chance during the week to dive into faith questions. Middle school and high school are divided after eating with everyone in the great hall. There is a separate registration for FEAST

which has meal reservations on it as well. You can find this on the website. [www.slpres.org](http://www.slpres.org).

Parent connect nights happen periodically. These are designed to cover specific topics regarding parenting teenagers. Please come for great discussion and a chance to connect with other parents.

Overnight retreat details, both middle school and high school, will come separately. Both are at the Calvin Center in Hampton, GA. The Calvin Center is the Presbytery's camp and conference center. We have a great partnership with them. [www.calvincenter.org](http://www.calvincenter.org).

On October 24th the High Schoolers are headed to Druid Hills Night Shelter. Sign-ups to help will come on September 18 and following. We will need some parents to help with this evening of service. Middle Schoolers will have fun at church.

As always things can change and they probably will as schedules change. Please check your weekly emails as those will have the most pertinent details.



Always check the weekly e-mail to make sure all the details are the same. Things change, though we hope not too much. If you are not on the e-mail list e-mail Liz Catlett at:

**LizCatlett@slpres.org**

Check the [www.slpres.org](http://www.slpres.org) website for a calendar too.

January	February	March	April
1_No morning or evening	1_FEAST 3 5_Sunday School 9:30 _“Souper Bowl” Sunday _Confirmation _Youth tailgate party through the first half of the super bowl. 8_FEAST 4	4_Sunday School 9:30 _Confirmation _Youth Connection 5:30-7:30 7_FEAST 7 (3-11 Lovett/Mt. Vernon spring break)	1_Palm Sunday _Sunday School 9:30 _Confirm _Youth Connect 6:00-7:30 (no dinner) (mar 31- april 8 Fulton/DeKalb Spring break)
8_Sunday School 9:30 _Parent and Youth Kick Off 5:30-7:30 12-15_Family Mission Trip to Charlotte for all ages.	12_Sunday School 9:30 _Youth Choir sing @ 11:00 _Confirmation _Youth Connect 5:30-7:30 15_NO FEAST	11_Sunday School 9:30 _Confirmation _Youth Connect 5:30-7:30 16_FEAST 8	5_Maundy Thursday 6_Good Friday 7_Easter Vigil 8_Easter Sunday _No Sunday School, confirmation, or Evening
15_Sunday School 9:30 _Youth Connect 5:30-7:30 _Confirmation Starts 18_FEAST 1 22_Sunday School 9:30 _WOW Sunday _Confirmation _Youth Connect 5:30-7:30 25_FEAST 2	19_Sunday School 9:30 _WOW service _Confirmation _Youth Connect 5:30-7:30 21_Shrove Tuesday Pancake Dinner (FEAST 5) and the American Boy Choir concert @ 7:00pm. 22_Ash Wednesday Service 7:00PM. _Youth Choir sing 24-26_Confirmation Retreat	18_Sunday School 9:30 _WOW Sunday _Confirmation _Youth Connect 5:30-7:30 21_FEAST 9 (17-25 Wesleyan Spring Break)	15_Sunday School 9:30 _Confirmation _Youth Connect 5:30-7:30  22_Youth Sunday _Graduation Dinner 6:00-8:00pm everyone is invited.  29_Sunday School 9:30 _Confirmation meet with Session at 9:30am. _Youth Connect 5:30-7:30
27_Tartan Trot Prep/Set-up/ pre race dinner 28_TARTAN TROT road race 29_Scottish Heritage Sunday _Sunday School 9:30 _No Confirmation _No evening	26_Sunday School 9:30 _Youth Connect 5:30-7:30 _Parent Connect 5:30-7:30 29_FEAST 6	25_Sunday School 9:30 _Youth Choir @ 11:00 _Youth Connect 6:00-7:30 late start, no dinner. _Confirmation Dinner at Druid Hills. 5:30-8:30 28_FEAST 10 (final FEAST)	May 6_Sunday School 9:30 _End of Year Party Parents and Youth 5:30-7:30 May 13 and 20 _Sunday School 9:30 _Summer Trip Planning in Evenings

## Spring Details

The week-to-week stuff is pretty much the same as in the fall. Sunday school, W.O.W., Youth Connect, Parent Connects, etc all follow the same patterns. See the Fall Schedule for more details.

January 28 is the TARTAN TROT. This is the only fundraiser we have to do, praise God. It is an amazing event for the life of the church and proceeds are for us to go on all our summer trips and to help our community in lots of great ways. Plan on being at church the week before and that morning to help and/or run. It takes about 140 volunteers to welcome the over 1500 people we are expecting.

April 22 is YOUTH SUNDAY. Everyone will have a chance to participate in the worship service. Seniors are encouraged to

preach at this service. Plan on being at church early that Sunday morning to practice.

Also, April 22 will be our senior recognition dinner. This is a night for the entire church to come celebrate the transition that these people are making after high school. Again, this is for everyone in the youth group to celebrate graduation and what God is doing in their life. Reservations will be requested sometime in March. Everyone is invited.

May looks a little different than the rest of the year. May 6 will be our final Sunday night of the year. The rest of the Sunday evenings in May are reserved for summer trip preparations. If you are going on a trip this summer you need to attend your specific meeting. This is important to make sure we are all on the same page before busy summers come around.

## May Summer Trip Meetings:

For most of the month of May we will meet together as mission and trip teams to get to know each other, learn about our trips, and finalize our plans. These are mandatory meetings you will receive information about these nights when you register for the trip.

# So who's really in charge around here:

We know we can't do this alone. It takes some people to make all this happen. In fact, it takes about 75 volunteers throughout the year to make St. Luke's Youth Connection happen! Can you believe it? Here are some people you need to know about to start with though:

## Rev. Phil Brown



You can call him Phil. Phil is the "official" person in charge. He loves spending time with youth and talking through all those things that bug us about faith. Phil graduated from

Columbia Theological Seminary and is starting his third year at SLPC. He is married to Kara and has a sweet dog that sometimes shows up for youth group! He's a sucker for a great meal, a good movie, and a good joke.

### Phil's Info:

PhilBrown@slpres.org  
cell: 970-215-9041 (call anytime, really)  
office: 770-393-1424 ext. 238

## Brittany Harrold- Youth and Children's Intern

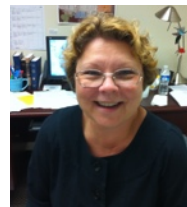


Brittany Harrold (she's the one on the left) is our new seminary intern for children's and youth ministry. She is studying at Columbia

Theological Seminary to learn how to be the best Christian Educator she can be. We are excited to learn from her and be in ministry with her. She's got tons of new ideas for us. She loves the Presbyterian Church (U.S.A.), and can't wait to get to know each of you. You'll see her around on Sunday mornings, Sunday nights, and Wednesday nights. You can learn more about her on page 6 of the handbook.

### Brittany's Info:

brittanyharrold@slpres.org



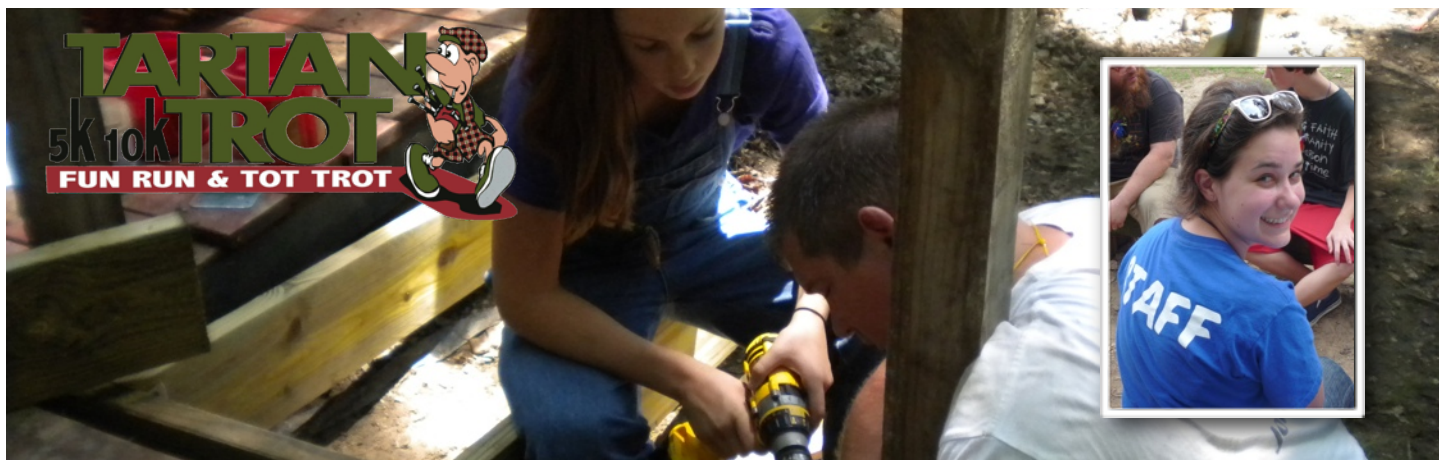
## Liz Catlett-Administrative Essential

Where Phil is the "official" person in charge, Liz is the one who really knows what's going on. Liz is the

Administrative Support for youth ministry. You will get weekly e-mails and phone calls from her. Give Liz all your forms and checks throughout the year. They will be safer with her than anywhere else.

### Liz's Info:

LizCatlett@slpres.org  
770-393-1424 ext. 236



## Tartan Trot January 28, 2012

The Tartan Trot is a 5k and 10k road race that serves as our major fundraiser. Its an amazing race. Check out [www.TartanTrot.com](http://www.TartanTrot.com) for more info. Here's how you can help:

### 1. Sponsorship

Your family, your friends, your business, your friends business, your friends friend business, your laundry mat, your coffee shop, whoever you know ask them to sponsor. There are various levels available. Get creative, maybe they have a service they can give to help us offset some of our costs. About half of our proceeds come from sponsors. They are vital for us. Youth please get 10 people registered for the race. The money goes right back to you.

### 2. Volunteer

It takes about 140 people to make the race happen. You are one of those people. Pre-race help, pre-race dinner help, and race day help is needed. Many jobs will allow you to still run if you would like.

### 3. Pray

Pray for the race, for the 1500 people who will come to our church, for the youth and adults who use this money to help others around the world. Pray for the organizations we partner with and the thousands of people they impact around the world. Pray for those in charge, for those who make many decisions for this event.



## Ways to get plugged in.

7 easy ways you can be involved (of course there are more too)

### 1. Prayer Buddies

Each person will be assigned a prayer buddy at the beginning of the year (or when they come). Pray for that person. Prayer matters, you know.

### 2. Welcoming Crew

We want everyone to feel like they have stepped into their house when they walk into church. You can help make people feel welcome. Take a Sunday night and volunteer to be part of the welcoming crew.

### 3. Study Hall Help

Wednesday nights, come a little early and study. Studying together can help all of us be better and we can ask questions if we need to.

### 4. Invite a friend.

The more the merrier! Bring a friend and introduce them to others. Include them in all we are doing.

### 5. Sign up to help on the foundation teams.

Each foundation team needs a hand. Volunteer to serve on the team. Teams rebuild in the spring and they need your fresh ideas.

### 6. Cook dinner with your family for a Sunday night.

You know what you like to eat. Share that with the rest of us. Help cook for about 60 people and bring out your inner chef.

### 7. Get 5 friends to run in the Tartan Trot race.

Bring your friends. Make a team. Dress funny and run in a great race that supports you!!!

# Get to Know Brittany Harrold



I grew up at the beach in St. Augustine, FL. My favorite part about the beach was getting strawberry cheesecake snow cones with marshmallow

topping on the way home. I rode my bike everywhere in town as a kid, and I still love to ride my bike anywhere it is not hilly (we will see how I do in Atlanta). I always went to youth group and Sunday school growing up, and my favorite part was building Bible stories out of legos. I have worked in a couple of churches, Thornwell Presbyterian Church and Faith Presbyterian Church. I enjoy my job because it is adventurous and creative to see how we can grow in our faith in Christ together through games, stories

and more activities. I was excited to see that St. Luke's travels in the summer to Mexico, Montreat and Massanetta. I went to all three of those places for camps and missions trips when I was a youth. I even went back to Massanetta as a high school enabler for three summers and to Montreat as a college summer staff for three summers. Those places have a special place in my life and faith journey, as I am sure they do in yours too. One of my other favorite things to do is read. I really enjoy reading what the kids and youth are reading too. I have read the Harry Potter series, Twilight and I am working on the Hunger Games series too (it's awesome, so no spoilers please!). Next on my book reads apparently has to be the Percy Jackson series, do you agree? I am excited to get to know each of you this next couple of months at youth group, Sunday school and at Feast. I hope to see you all around!

## Confirmation

Confirmation is an experience for 8th graders in the spring. It is 12 weeks of intense study and great questions. We work hard, but we have a ton of fun too. We ask questions like: What does it mean to be Presbyterian? What does it mean to be a Christian? What is the Bible? etc. At the end of the experience each participant will write their own faith statement to share with the session. After wrestling with hard questions of faith each youth will decide if active membership in the Presbyterian Church (U.S.A.) is what God is calling them to. If you are in 8th grade look for more information in December.

**Sunday afternoons:** In general, we will meet on Sunday afternoons starting January 15 3:30-4:30PM in the middle school room upstairs. Each week we will have a different topic we talk about.

**Curriculum:** We use a variety of sources, but this year our primary curriculum will be re:Form. If you would like more information ask Phil or head to [www.wearesparkhouse.org/reform](http://www.wearesparkhouse.org/reform). We are super stoked about this curriculum and can't wait to see what great discussion comes from it.

**Covenant Partners:** Each confirmand will be connected with a session member with whom they will meet. They will help with faith statements and they really want to get to know you.

**Retreat:** We will also have a retreat together in the mountains of GA. This is a chance to get away, engage in actual retreat, and do some great spiritual practices. We will work on our faith statements and have a ton of fun just being away from it all. Block February 24-26 off on your calendars now. Cost \$60 for the weekend.

**Ash Wednesday Service:** On March 9th we will help lead the Ash Wednesday service at church. We will help the congregation prepare for Lent.

**Druid Hills Night Shelter:** March 27 we will head to the Druid Hills Night Shelter to serve dinner for the 24 men who live at the shelter. We need parents for this evening who are willing to drive and help us make food. More details to come. It's a great opportunity to serve and get to know some people we probably wouldn't get to know otherwise.

In Mexico, we build a house in one week from the foundation up! We also build relationships with some amazing people along the way too.



## Summer Trip Info

Summer 2012 will be here before we know it. We have some awesome trips coming up. There are opportunities for you to go as far as Honduras and stay as close to home as TN. Each trip has the same deposit (\$150) to reserve your spot and they are due on January 22. The remaining balance will be due on February 24. Below are our estimates based on trip costs and our hopes for funds raised through the Tartan Trot. Again these are estimates, they could go up or down, but probably not significantly. There is additional financial aid available. Contact Rev. Phil Brown.

## VBS

**Dates:** June 11-14

**Age: All Ages**

**Participant Cost:** Free if you help

**Info:** So it's not really a trip for you to go on but a local week of service for you to participate in. We need all kinds of help this week sharing with the younger one's of our congregation. There is an opportunity for you to serve this week.

## Mt. TOP

**Dates:** June 17-23

**Age: 13 (by camp) and up**

**Participant Cost:** around \$250

**Info:** Camp and Mission work you say? Yes! It's a week at a camp with 120 of your favorite new friends serving the rural Cumberland Mountains of Tennessee. Two tracks to choose from: The service camp where you do building projects and day camp where you provide a week-long life-changing experience for the kids of this area. [www.mountain-top.org](http://www.mountain-top.org)

## Mexico

**Dates:** July 1-7 and 8-14

**Age:** Middle School and up

**Participant Cost:** Air Fare to San Antonio and some meals

**Info:** Intergenerational trip for ages across the board. Families are encouraged to go together. There will not be a dedicated "youth" week this summer, but that doesn't mean you can't go. If you want to go we can probably work it out. [www.cpcmexico.org](http://www.cpcmexico.org)

## Massanetta Springs

**Dates:** July 12-15

**Age:** completed grades 6-8 by June 2011.

**Participant Cost:** around \$200

**Info:** Middle school only conference at an air conditioned camp in Virginia. Fun times, great worship, small groups, energizers, games, and all-out good times. [www.massanettasprings.org](http://www.massanettasprings.org)

## Montreat

**Dates:** July 24-30

**Age:** entering 9th-graduated 12th grades

**Participant Cost:** around \$250

**Info:** High school only conference with up to 1000 others. We will stay in a house for a week of fun worship, small groups, and more fun. [www.montreat.org](http://www.montreat.org)

## Summer Trip

### Deadlines

These dates may seem a little early, but we have deposits to turn in and spaces to reserve. We don't want to miss out on any awesome opportunities!

### December 1

Intent on going. Let Liz or Phil know what trips you think you are headed on. This is not a definite, but helps us estimate how many spots to reserve.

### January 22

\$150 Deposits Due to Liz or Phil, along with all paper work signed and notarized (if necessary).

### January 28

Tartan Trot Race, if you are headed on a trip you should be at the race helping or running. Either is fine. Get a group together and make the dash together.

### February 24

Final payment due to Liz or Phil by 4:30PM. We will know what the remainder will be by this time because we will have had an amazing Tartan Trot!

### May

Each Sunday evening we will have a gathering meeting for each trip. More details to come.

## I'm an adult and I want to go, too!

Hooray! You are more than welcome to come along with us. We are fortunate that we can supplement your entire trip! That's right, you get to come for free! It's our way of saying thanks for taking a week out to be with us. We really appreciate it.

\*Mexico is a little different and an exception to this rule.

Where to find everything you might want to know:

**Online Calendar:**  
[www.slpres.org/youth.asp](http://www.slpres.org/youth.asp)

**Info on events:**  
[www.stlukespres.blogspot.com](http://www.stlukespres.blogspot.com)

**Registration information:**  
[www.slpres.org](http://www.slpres.org) (forms)  
give to Liz Catlett at SLPC  
[LizCatlett@slpres.org](mailto:LizCatlett@slpres.org)

**I want to help:**  
[philbrown@slpres.org](mailto:philbrown@slpres.org)

**I have something you might need:**  
[philbrown@slpres.org](mailto:philbrown@slpres.org)

**I want to know more about anything:**  
[philbrown@slpres.org](mailto:philbrown@slpres.org)

**St. Luke's Office:**  
1978 Mt. Vernon  
Dunwoody, GA 30338  
[www.slpres.org](http://www.slpres.org)  
77-393-1424  
Office hours: 8:30-4:30 M-F  
Phil's day off: Friday.



## St. Luke's Youth Ministry

So there you have it. That's us in a nutshell. We are super glad for what God is doing here. We are very excited for what's in store for our new structure and give glory to God for it.

There is so much going on we hope you don't feel lost in the business of things around here. If you have any questions please ask. We are here to help. If you have ideas of what's missing, what can be changed, how we can do better, we welcome all feedback. It's how we get better.

Look for us on facebook. Twitter: SLPChurch. We use google for our blog and online calendar. If you have ways you can help please let Phil know. It takes everyone for a success. We are all in this together.

Grace and Peace to you all,

Rev. Phil Brown

# St. Luke's

1978 MT. VERNON  
DUNWOODY, GA 30338