

Knowing Serving Sharing



The Mission & Vision of St. Luke's Presbyterian Church

Our Mission

Responding to God's call and empowered by the Holy Spirit,
we invite all to join us in
knowing, serving, and sharing
Jesus Christ here and around the world.

Our Vision

To be a beacon of faith, hope, and love ~
every member an active disciple in Christ's ministry.

A Word from Jason

Dear Friends,

Among the many pieces of news you'll find in this edition of the Connections is the announcement of a new photo directory for St. Luke's. An updated directory is one of the most useful tools for church membership because it helps us to better know and connect with our church family. The key to the success of the directory, as you know, is the participation of the church membership. The Church Development Committee will be providing many opportunities for every member of St. Luke's to be photographed, and our goal is 100% participation!

I hope you will be watching for more information regarding the schedule for the photo shoots, and that you'll join us in this effort to strengthen our "connections" to each other as the St. Luke's family of faith.

In Christ's Love,

Jason

Pictorial Directory Coming!

Smile....it's picture time again!



See page 12 for more details. Mark your calendar today!

Inside this issue:

Adult Christian Education	2
Youth	3
Children's Ministries	4
St. Luke's Little Saints Preschool & Kindergarten	5
FEAST for All	6-7
Adult Ministries	8-9
Music	10-11
Celebrate the Arts	11
Stephen Ministry	13
Caring Ministries	13-15
Mission & Outreach	16-17
Scouts	18
Adult Fellowship	18-19
Health & Wellness	20

KNOW

DISCIPLE Short Courses

Disciple Bible Study: Is one of your New Year's Resolutions to do more Bible study? Are you looking at a good way to get started with friends from St. Luke's? Then there are two new opportunities for you beginning early 2012!

Invitation to the Old Testament: What does it mean to be God's chosen people? And how does the story of Israel's covenant with God inform our own identity as heirs of that covenant? Through this study, participants will be invited to listen afresh to the witness of the Old Testament to hear God's call and purpose for their own lives and respond to that call. Facilitated by Paula Barbin, the class will meet on Thursday evenings, from 7-9 p.m. for 9 weeks. (January 19 & 26 in Room 231; February 2-March 15 in Room 109)

The Old Testament Unwrapped: This course looks at especially prominent passages from a cross-section of the Old Testament, using each passage and representative figures or episodes as a highway into biblical meaning. Whether it's the story of Adam and Eve, David and Bathsheba, or the apocalyptic imagery found in the book of Daniel, biblical characters and passages come to life and vividly reveal the magnificent artistry that suffuses the Old Testament. We will explore the content of the biblical books, and also explore debates over their meaning, the historical and cultural situations they reflect and address, and the critical methods by which they have been interpreted. Facilitated by Shannon Dill and Janey Hoag, the class will meet on Thursday mornings, 9:30-11 a.m. for 10 weeks. (February 2-March 29)

For more general information regarding Disciple studies, see the St. Luke's website or contact Shannon Dill, shannondill@slpres.org or Bill Barbin, wjbpsu70@comcast.net.

Christian Education ~ Sundays

Sunday School: 9:30 - 10:30 a.m.

Seasons of the Spirit, Room 231-233

Leaders: Paula Barbin, Jan Billions, Wayne Radloff & Mark Rogers

This discussion class is biblically-based and follows the Revised Common Lectionary. The curriculum enables adults to study and consider the same Scriptures which are frequently used in the worship service.

The New Testament, Room 145, Parlor

Leaders: John Bradley, Susan Edmonson, John Massey & Jim Schell

A traditional Bible study that is relevant, thought-provoking and stimulating. This class is appropriate for all levels of biblical knowledge.

Faith Foundations, Room 232

Leaders: Steve Cashwell, Beth Drescher & Mary Martin

This class explores Scripture, Christian belief, and our faith with the goal of growing as Christian disciples.

Soul Food, Room 234

Leaders: Jim Bryant, Denis DuBois, Hannah Esther, Alan Larson & David Tharp

Finding Sustenance for Faithful Living: Fellowship, study and discussion on a range of topics related to spirituality in our lives. The "Thoughtful Christian" curriculum provides the source material for this class.

FINCH (Families in Christ), Room 203

Leaders: Joanna Mangum & Emily Voigt

This class brings together parents and adults to learn and grow in their own faith and their ability to share that faith with their families.

24 Hours That Changed the World - A Congregation-Wide Lenten Focus (February 26-April 1)

No single event in human history has received more attention than the suffering, crucifixion, and resurrection of Jesus of Nazareth. During Lent this year, all ages of our congregation will be invited to better understand the significance of the last twenty-four hours of Jesus' life through a sermon series, a Lenten devotional book for personal/family use, and Sunday School class discussions (in classes that choose to use the 24 Hours curriculum) based on a video study by popular pastor Adam Hamilton. We hope you will join us!

KNOW

The Basics - YOUTH

The ministry to the youth of St. Luke's is a VALUE-based youth ministry. There are five key Christian values we strive to embody through all our ministry. We need help in all these areas. If you have particular gifts for any of these we'd love the help. Each value drives particular programs in our ministry.

Welcoming: We affirm that everyone belongs to Christ. Therefore all belong at church. We will know each other by name as we make deep connections with one another.

Caring: We embrace and connect with each other by sharing all of who we are and by praying for each other.

Faith Growth: We seek to provide an environment where we all will learn and grow in faith, asking questions and figuring out God's call for who God wants us to be and what God wants us to do.

Love and Service: We serve others by reaching out to people in need, building relationships of compassion. Jesus said the greatest commandment is to love one another. Love is patient, unconditional, uplifting, and selfless.

Administration: We provide efficient, loving, and empowering training, organization, and support for all youth ministry at St. Luke's Presbyterian Church.

Weekly e-mails will be sent out with all info.
Please contact philbrown@slpres.org to be added to the list.

To find out the latest and greatest going on in Youth check the blog at:
www.stlukespres.blogspot.com
St. Luke's Youth Ministry welcomes all into a caring environment as we grow in faith to become active disciples through love and service.

Sundays - YOUTH

- ◆ **Sunday School:** 9:30 - 10:30 a.m., Youth Rooms, Grades 6-12
- ◆ **Youth Choir:** 4:30 - 5:30 p.m., Choir Room
- ◆ **Youth Fellowship:** 5:30 - 7:30 p.m., Great Hall and Youth Rooms
- ◆ **W.O.W. (Worship Our Way):** January 22, February 19, March 18
- ◆ **Confirmation Class** starts January 15 (3:30 p.m. in the Middle School Room) and runs through May 6 which will be Confirmation Sunday. The Confirmation Retreat will be February 24-26.
- ◆ **Youth Sunday:** April 22 & Graduation Dinner (6-8 p.m.)

Summer Trips - YOUTH

Summer Trip Info: Summer 2012 will be here before we know it. We have some awesome trips coming up. There are opportunities for you to go as far as Guatemala and stay as close to home as Tennessee. Each trip has the same deposit (\$150) to reserve your spot and they are due on January 22. The remaining balance is due on February 24. For more information see Page 17.

- ◆ **VBS:** June 11-14 (All ages)
- ◆ **Guatemala:** June 25-July 2 (High School Graduates & College)
- ◆ **Mountain T.O.P.:** June 17-23 (13 by camp and Up)
- ◆ **Mexico/CPC:** July 1-7 or July 8-14 (Middle School and up/Intergenerational)
- ◆ **Massanetta Springs:** July 17- 20 (Completed grades 6-8 by June 2011)
- ◆ **Montreat:** July 22-28 (Entering 9th-graduated 12th grade)

KNOW

Sundays - CHILDREN

Sunday School, 9:30 - 10:30 a.m.

Nursery Friends

We welcome infants, little walkers, big walkers and two's to come and enjoy their time at church in a loving environment. Our professional caregivers provide plenty of smiles and age-appropriate activities.

Godly Play

Created especially for threes, fours, and fives, this imagination-driven program begins each class with "I wonder...". We wonder and learn about Bible stories, parables, and Christian traditions through cooperative play with simple wood figures. We also love creating works of art and singing!

Faith Journey

Children in first through fifth grades will love our "never the same thing twice" approach to learning! Each week we will begin together as a large group at 9:30 (usually in "The Attic" on the Great Hall stage) for music and a sneak peek at our lesson. Then, at about 9:45, we depart to our age-level classes where we can explore the story with art, movies, science, storytelling, or games. Our first "tour" in 2012 will be "Jesus in the Temple." Other special events and units include a service project on February 19, joining our church family in a special six week Lenten study of "24 Hours that Changed the World," a post-Easter exploration of "The Baptism of Jesus," and two special Sundays of May Missions.

During Worship

Child care is provided at both the 8:30 a.m. and 11 a.m. worship services for children through age three.

Faithful Friends is our worship preparation program for Pre-K and Kindergarten students during our 11:00 a.m. worship service. These children begin worship with their families in the sanctuary, and then go to learn about the whys and hows of worship. During the winter/spring semester we will focus on prayer, the benediction, the sacraments of baptism and communion, and the importance of fellowship among Christians. We experience our own "sermon" each week with a Bible story and related activity.

W.O.W.! (Worship Our Way) Service is for grades 1 through 12, usually held on the third Sunday of the month during our 11 a.m. worship service. The children begin worship with their families in the sanctuary and then continue worship in the chapel after "Tell Us Our Story." Each W.O.W.! worship time is led by a St. Luke's minister and our "house band" and singers comprised of St. Luke's kids and youth. W.O.W. dates for the winter and spring are January 22, February 19, March 18.

Wednesdays - CHILDREN



See pages 6-7 for details about Wednesday Night, "FEAST For All".

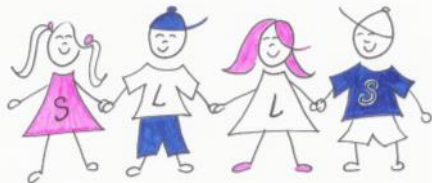
Special Events - ALL

Easter Egg Hunt

Our annual Easter Egg Hunt is a springtime favorite and a wonderful way for our faith and fellowship to connect. Mark your calendars for March 25 so that your family can join us for the church-wide lunch at noon, followed by age-group egg hunts in different locations around the church.

KNOW

St. Luke's Little Saints (SLLS) Preschool and Kindergarten



St. Luke's Presbyterian Church offers your child a nurturing and loving environment in which to grow during our weekday Preschool and Kindergarten program. Located in Sheppard Hall, your Little Saint will enjoy learning through play in our Preschool. Our Kindergarten program embraces the playful spirit of children while preparing each child for academic success, with extended hours twice a week.

If your "Little Saint" is ready for a wonderful weekday experience, come join us! Please call to inquire about available space.

Preschool

Age: 12 months to 4 years

Hours: 9:15 a.m. to 12:15 p.m.

Kindergarten

Age: 5 years old by September 1

Hours: Mon/Wed/Fri, 9:15 a.m. to 12:15 p.m. and Tues/Thurs, 9:15 a.m. to 2:30 p.m.

St. Luke's Little Saints Preschool & Kindergarten is accredited by SACS/AdvancED.

SLLS is a member of Georgia Preschool Association; GAYC (Georgia Association of Young Children); North Georgia Preschool Association; Metro Atlanta Preschool Directors' Group; and Preschool Directors' Network.

REGISTRATION FOR THE 2012-2013 YEAR

Registration for St. Luke's Members: January 24

Registration for currently enrolled families and new siblings: January 25

Registration for new community families: January 26

For more information or to make an appointment to tour the school, please contact Carol Perry, Director, at 770-393-1424 ext. 240, carolperry@slpres.org.

CAMP LITTLE SAINTS



Our summer camps are available for all children who have turned two by September 1, 2011 (must be potty trained) through children who have completed Kindergarten. Campers bring a lunch and enjoy a fun-filled morning with friends. Registration starts in March.

Camp dates:

May 29-June 1 and June 4-June 7
9:00 a.m.-1:00 p.m.

KNOW

Wednesdays ~ FEAST for ALL



Wednesday evenings are for everyone at St. Luke's, with dinner, fellowship and a wide range of opportunities to know and share in the love of Christ. Complete information on class and dinner registration are available in the FEAST for ALL brochure found on the church website, www.slpres.org, and in the church lobby. Come and share the feast!

Dinner Details

Serving lines will be open from 5:45 p.m. until 7:15 p.m. during each FEAST Wednesday. Dinners may be reserved in advance, by using the registration form, for the entire semester (at a reduced price), or reserved for individual weeks through the blue pew card or by calling the front desk by Monday noon. Youth may reserve their meals through the advance reservation form or they may simply show up with their \$5 payment. Look for the youth table reserved in the Great Hall. Meals for children registered for classes may be reserved in advance on the registration form. Meals for children who are not enrolled in classes may be reserved through the blue pew cards or calling the front desk. Class and dinner registration are available in the FEAST for ALL brochure which can be found in the main lobby or on the website at www.slpres.org.

FEAST for Children

Threes, Pre-K & Kindergarten (6:30 - 7:15 p.m.):

Tooty Fruity! We will explore the Fruit of the Spirit in creative and engaging ways. Love, Joy, Peace, Patience, Kindness, Generosity, Faithfulness, Gentleness, and Self-Control will be presented with Bible stories, crafts, games, and other activities. Parents of children in this age group will each take a turn teaching so that all families may take advantage of our Wednesday night offerings.

1st through 3rd Grade (6:30 - 7:15 p.m.):

Israel Gets a King! We will be continuing our incredible walk through God's word with Phil Vischer's tremendously entertaining and informative DVD-based series, "What's in the Bible?" Our stories will come from the books of First and Second Samuel, and our format will be a blend of large group/small group activities.

4th through 5th Grade (6:30 - 7:15 p.m.):

The Adventures of Narnia! We will move further into our adventure through Narnia as we continue our study of "The Lion, the Witch, and the Wardrobe" by C.S. Lewis. This is more than just a book discussion, though - we will weave the happenings in Narnia with some of our basic Christian beliefs and practices.

Child Care: Infants and toddlers will enjoy nursery time with toys, movies, books, and lots of love. Child care is available from 5:15-7:30 p.m. each Wednesday FEAST for ALL evening.

SPECIAL EVENT

Shrove Tuesday, February 21

Our annual Shrove Tuesday Pancake Supper will return on Tuesday, February 21! In addition to our delicious "breakfast for dinner" meal, we will also enjoy Mardi Gras games and crafts as we learn more about why this holiday is important to our faith. This is a special stand-alone event that is not part of our regular FEAST for ALL dinner payment. Dinner reservation details will be coming soon. Also, a special concert by the nationally acclaimed American Boychoir will begin at 7 p.m. in the Sanctuary.

KNOW

FEAST for Youth

Youth Connection (6:30 - 7:15 p.m.):

All our youth will welcome a break in their week to hang out at church, reconnect with friends, and dive deeper into their day-to-day faith. The Middle School youth will be studying “The faithful side of *The Hunger Games*” by best-selling youth fiction author, Suzanne Collins. Each student will need their own copy of this book; copies available at the church for \$10. The High School youth will study faithful responses to current events. For more information or to see the curriculum, go to www.wiredword.com. Dinner starts at 5:45 p.m., pick up at 7:15 p.m.

Music Opportunities:

Youth are always invited to join both the Festival Ringers and the Chancel Choir (see info on page 10).

FEAST for Adults

Study Opportunities for Adults: All studies meet from 6:30 - 7:15 p.m.

This We Believe - Eight Truths Presbyterians Affirm (January 18-March 14)

Led by Shannon Dill, Chapel

From the book of the same title by Rev. Stephen Plunkett, we will explore together eight truths that are foundational to who we are as Presbyterians, both as a denomination and as individuals. Based on scripture yet mingled with our experience and the tradition of our faith, we will come to better understand our way of being Presbyterian and the difference it makes. Copies of “This We Believe” will be available for purchase. The class will not meet on February 22 for Ash Wednesday.

God’s Story, Your Story: When His Becomes Yours (January 18-February 29)

Led by Jason Whitener, Room 231-233

In this six-session video study, popular pastor and bestselling author Max Lucado gives a fresh perspective on how our daily lives relate to God’s grand, epic story, Our own journeys of faith will come alive as we explore the divine narrative in Biblical and contemporary characters, and discover how the ancient stories of Scripture reveal God’s plans for us today. The class will not meet on February 22 for Ash Wednesday.

The Beverly Hillbillies Bible Study (March 7 & 14)

Led by Jason Whitener, Room 231-233

Jed Clampett didn’t talk fancy, but he spoke moral truth with life-changing power. Drawing modern parables from this beloved show, in which a simple family lived successfully in a glitz and glitter world, this unique video study enables us to relate Biblical truths to the joys and struggles of daily life.

FEAST Special Events for ALL

March 21 - Phun with Phil

Come for a night of group games and entertainment. This night is all about Christian fellowship and having fun! There will be something for every age group, so let’s just “have phun.”

March 28 - Habitat for Humanity Service Night

Join us as we will kick off the next St. Luke’s Habitat Build #16 right here in the Great Hall! We will build picnic tables, have arts and crafts projects for adults and children, and other ways that the entire congregation can celebrate the start of our next Habitat Build. Everyone is welcome.

FEAST Music Ministry

Opportunities for all ages to participate in the choirs of St. Luke’s are offered throughout the evening on Wednesdays. Please see page 10 under “Music Ministry” for complete information.

KNOW

Inquirers' & New Members' Class - Spring 2012

If you are interested in learning more about St. Luke's and/or are interested in joining St. Luke's, please contact Jason Whitener at 770-393-1424 ext. 223 or by email at jasonwhitener@slpres.org. The next Inquirers' and New Member Class is planned for Sunday, April 22 through Sunday, May 20.

Presbyterian Women

A Welcome Note from Donna Mason, Moderator of PW

Our annual Christmas Dinner and Communion Service, held on Monday, December 5, was attended by over 150 women from St. Luke's and the Dunwoody community. Kathie Chipman and Wendy Moreland once again transformed the Great Hall into a beautiful dining room with glowing candles and festive decorations. Our guest speaker was the Rev. Joy Fisher who traveled from Stockbridge to join Shannon Dill in the service. Jill Hudson and Kelda Hearn delighted all with the beautiful music. Thank you to Mary Martin and Sally Birsinger for organizing the lovely candlelight service. Congratulation to Jan Billions who was presented with the Honorary Lifetime Membership award for her outstanding service to PW and to St. Luke's!

On Sunday, January 22, PW will make 12,000 bologna and cheese sandwiches for the Atlanta Community Food Bank. The Food Bank distributed the sandwiches to various homeless shelters through the metro Atlanta area. This is a church-wide event that is enjoyed by volunteers of all ages. We hope you will join us in the Great Hall that day to assemble some sandwiches.

Other PW projects for the first quarter include Valentine Boxes for our college students and homebound members and Easter baskets for CHRIS Kids. We invite everyone to support these projects by donating items for the boxes and baskets or by making a contribution for postage and supplies.

PW's circle meetings are the second Monday and Tuesday of the month. Two of the circles meet in the morning and the third circle meets on Monday evening. The Monday morning circle has child care provided. It is never too late to join. This year's study is *"Soul Feast: An Invitation to the Christian Spiritual Life."*

We will close our year with our annual Spring Gathering on May 7, 2012. This is a pot luck dinner held in Hannaford Garden (weather permitting).

Please email me if you have any questions at donna.mason@me.com.

Blessings,

Donna Mason

Women's Retreat



Mark Your Calendar! Make Your Reservation!
Don't Miss the 6th Annual Women's Retreat

"God's Promises to a Woman's Heart"

March 16-18, 2012

Forrest Hills Resort Dahlonega, GA

Early Registration Begins Sunday, January 8, 2012.

Should you have any questions, please contact Debi Elkins:
770-458-6415 or debi.elkins@att.net or Shannon Dill in the church office.

KNOW

Georgia Presbyterian Cursillo

Cursillo...“a short course in Christianity”
 Are you ready for the next step in your spiritual journey?
 Cursillo = His Love Endures Forever

Have you ever stopped to think about how long eternity lasts? One definition of eternity is, “time without end.” In our hurried society, it is difficult to relate to the concept of time without end – time that endures forever. In our world of four-minute microwave meals, there aren't very many things that endure forever. Psalm 136:1 says, “Give thanks to the Lord for He is good, His love endures forever.” According to the psalmist, God's love, His perfect love, His love for us --- ENDURES FOREVER!!!

Do you or someone you know need a touch of God's endless love?
 Try 72 hours of love without end.....3 Days Long, but it Lasts a Lifetime.....
 Cursillo is intentionally led by the Spirit, divinely directed by God,
 and humbly served by fellow brothers and sisters in Christ.

**Upcoming Weekends in 2012 at the Pinnacle Retreat Center in Clayton, GA:
 GPC#40 - March 29-April 1, GPC #41 - August 16-19; Cost is \$100/person**

Learn more about Presbyterian Cursillo at www.georgiapresbyteriancursillo.com or contact
 or DaveElkins at debi.elkins@att.net, d.elkins@att.net or 770-458-6415.

Men's Bible Study

Men's Friday A.M. Bible Study, 6:40 a.m. to 8 a.m., in the Parlor. We are studying Mark. All men are welcome to attend. For more information, please contact Dave Elkins at 770-458-6415 or d.elkins@att.net.

Marriage Matters Ministry - Adults

This ministry is supported by married couples who are dedicated to enriching their own marriages as well as other marriages in our community. Our goal is to “build better marriages, beginning with our own.” This ministry offers a variety of activities, including the following:

Marriage Enrichment Group (MEG)

The group meets on Sunday evenings in the Parlor from 5-6:30 p.m. monthly, from September to May. This group is open to church members and others in our community. The format is fellowship followed by an activity designed to enrich each individual couple's relationship. If anyone would like to “go out” to dinner together afterwards, they may do so, or you may go home and “get your week in order,” you will have the rest of the evening ahead of you. Remember that child care (no age limit) will be provided free at the church. RSVP to Kimey Reed (404-441-8614 or kimeyreed@gmail.com). We will be meeting the following Sundays: January 22, March 18, April 15, May 20.

Better Marriages Getaway

SAVE THE DATE, February 10 - 12, 2012

“Love is Friendship Set to Music” at Callaway Gardens in Pine Mountain, Georgia. A fantastic getaway weekend for your marriage and a perfect Valentine's gift. For more information or to register go to bettermarriagesga.org.

For further information regarding any of the above, contact either:
 Kimey & Mark Reed at 770-394-3243 or kimeyreed@gmail.com
 Amy & George Stewart at 770-668-9257 or stewartga@comcast.net

SHARE

Music Ministry

At St. Luke's everyone has an opportunity to participate in music. Choirs sing regularly in worship and for other special events in the church and community. Special music occurs in the Sanctuary, Chapel and at various social events. Groups of musicians present concerts and special events throughout the year. Consider how you may be called to "share" your gifts.

Wednesday evening rehearsals are held in conjunction with FEAST for ALL. See page 6 for more information.

Wednesdays - CHILDREN

Cherub Choir, 5:15 - 5:45 p.m. (4 years to 1st grade) Room 203.
Directed by Kristy Whitener.

Westminster Choir, 5:00 - 5:45 p.m. (2nd-5th Grade) Choir Room.
Directed by Clair Maxwell.

Wednesdays - ADULTS

Festival Ringers, 6:15 - 7:15 p.m. Handbell Room
The only prerequisite is the desire to learn. Music-reading skills as well as advanced bell techniques are taught. *Both youth and adults are welcome to join.*

Chancel Choir, 7:30 - 9:00 p.m. Choir Room
The choir is comprised of adults, young and old, who come together each week to prepare music for regular services, special concerts and events.

Sundays - YOUTH

Youth Choir, 4:30 - 5:30 p.m. (6th-12th Grade) Choir Room. Our newest and fastest growing choir sings several times a year in worship and enjoys learning about and expressing their faith through singing together.

Special Music - ALL

Members of St. Luke's are invited to share their musical gifts through instrumental solos and ensembles with the congregation in a variety of ways throughout the year. Please contact Clair Maxwell if you would like to learn more about how you can share your musical gifts.

Celebrate the Arts at St. Luke's

The **2011-2012 Sunday Afternoon Concert Series** offers a beautiful variety of music and musicians to inspire and engage the joy of music in us all. Child care is provided.

🎵 **Sunday, January 22 at 5 p.m. ~ The Premiere Brass Quintet**
David Keuhn and Michael Hurt on trumpet; Travis Cottle on Trombone; Robert Coulter on Tuba; Joshua Crook on Horn. This is Atlanta's newest brass ensemble which will feature a rousing program of its favorite arrangements and original music for brass.

SHARE

Celebrate the Arts at St. Luke's Continues

♪ Tuesday, February 21 at 7 p.m. ~ The American Boychoir

The premiere concert boys choir in the United States will give their Atlanta touring performance at St. Luke's. Enjoy an evening of sublime choral music with this guest choir.

♪ Sunday, March 25 at 5 p.m. ~ Atlanta Balalaika Society Concert

The ABSO is the Southeast's premier purveyor of authentic Russian music and returns to St. Luke's. Come and enjoy the music and instruments as they present authentic folk selections that can be enjoyed by the whole family.

♪ Sunday, April 29 at 6 p.m. ~ Chastain at St. Luke's

Back by popular demand, this concert by member musicians in the Bruce Jones Band and vocalists from the St. Luke's congregation is presented in the style of the Chastain Amphitheatre and is a delight for all ages. Bring your picnic supper, along with your friends, and enjoy the program on church grounds.

Gift of an Anthem

Consider giving the gift of a choir anthem to our music library in honor, memory or dedication of a special friend, family member or loved one. This is a very meaningful and enduring way to contribute to the church's music and worship life, enhance our music library, and express appreciation for the person or persons to whom the anthem would be dedicated. After choosing a particular anthem, the music would be ordered, each copy would be labeled with your dedication, and the piece would be sung in worship shortly thereafter and for many years to follow. Contact Clair Maxwell at the church office (770-393-1424 ext. 227 or clairmaxwell@slpres.org) to discuss this opportunity and what the current music library and worship needs are.

Friends of Music

Become a Friend of Music patron by financially supporting the Music Ministry here at St. Luke's:

Friend (\$1-\$24) Supporter (\$25-\$99) Sponsor (\$100-\$499)
 Guarantor (\$500-\$999) Angel (\$1,000 or more)

Contact Clair Maxwell for more information. Your support is greatly appreciated.

To find out more about the Music Ministry at St. Luke's, contact Clair Maxwell at clairmaxwell@slpres.org or 770-393-1424 ext. 227. You can also check out our webpage at www.slpres.org/music.asp.

Scottish Heritage Sunday - January 29



On Sunday, January 29, we will celebrate our Scottish heritage. We will have a lovely service in the Chapel at 8:30 a.m. followed at 11 a.m. with the St. Andrews Society as they lead off with the Parade of Tartans. The Atlanta Pipe Band will play for us and everyone is encouraged to dress in their Scottish attire. A reception will follow the

11 a.m. worship service. Mark your calendar and plan to attend.

Special Lent & Holy Week Services April 1-8

Ash Wednesday, February 22 at 7 p.m.

Holy Week

Palm Sunday, April 1, 8:30 a.m. & 11 a.m.

Maundy Thursday Service, April 5, 7:30 p.m.

Good Friday Service, April 6 at noon with a soup lunch following in the Great Hall.

Easter Sunday, April 8, 8:30 a.m. and 11 a.m.

SHARE/SERVE

Acolytes - CHILDREN & YOUTH

Are you looking for a way to get your child more involved in the church? Is your child willing to fill one of the most important worship service leadership positions for St. Luke's during the 11 a.m. service? Does your child want to wear a cool red robe? Then being an acolyte is the spot for your child. The acolyte positions are: Bible Bearer/Water Bearer (2nd & 3rd grade), Candle Lighter (4th & 5th grade), Crucifer (5th & 6th grade), and Bell Ringer (7th & 8th grade). We would love to have your child be a part of this vital worship ministry.

If you would like more information or would like to get your child involved, please contact either Kay Loerch at kayloerch@sperduto.com or 770-392-3562 or Jenny Cummiskey at jcummiskey@peachtreebenefitgroup.com or 404-256-3562. Let us hear from you!

Ushers

There is a need for those willing to serve in a friendly and welcoming way as ushers. Duties include greeting everyone, passing out bulletins, taking up the offering, directing congregants during communion, and tidying up after worship. Questions? Contact John Tienken, 770-394-1104, tienkenj@gmail.com.

Pictorial Directory - ALL

It is time to update our formal pictures in the St. Luke's church directory. All of us - but especially our children - have changed so much in the five years since our last formal poses.

LifeTouch, the firm with whom we are working, provides the directory and photography on a no-charge basis to both the church and its members. In addition, each participating church family receives a complimentary 8x10 picture of their selected directory pose and a copy of the directory. Prints are available to order for an additional price.

Your selecting a photo-session date and time is the first step. Please sign up on the St. Luke's website (www.slpres.org) starting Tuesday, January 17 through Sunday, February 12. During this time, sign-up assistance will be available in the church lobby on Wednesday evenings and Sunday mornings. Sign-ups for the photo session are on a first-come, first-served basis. Photo-session dates, time and locations are listed below:

Photo Sessions

Week One

<u>Date</u>	<u>Time</u>	<u>Location</u>
Tuesday, February 28	2:30-8:50 p.m.	Upstairs Room 208 Sheppard Hall
Wednesday, February 29	2:30-8:50 p.m.	Upstairs Room 208 or Library
Thursday, March 1	2:30-8:50 p.m.	Upstairs Room 208 Sheppard Hall
Friday, March 2	2:30-8:50 p.m.	Upstairs Room 208 Sheppard Hall
Saturday, March 3	10 a.m. to 4:50 p.m.	Upstairs Room 208 Sheppard Hall

Week Two

<u>Date</u>	<u>Time</u>	<u>Location</u>
Tuesday, March 6	2:30-8:50 p.m.	Upstairs Room 208 Sheppard Hall
Wednesday, March 7	2:30-8:50 p.m.	Upstairs Room 208 or Library
Thursday, March 8	2:30-8:50 p.m.	Upstairs Room 208 Sheppard Hall
Friday, March 9	2:30-8:50 p.m.	Upstairs Room 208 Sheppard Hall
Saturday, March 10	10 a.m. to 4:50 p.m.	Upstairs Room 208 Sheppard Hall

SERVE

Stephen Ministry



Stephen Ministry is a caring and listening ministry providing *confidential*, one-to-one Christian care to people facing difficulty. Men are assigned to male caregivers and women to female caregivers. Stephen Ministers benefit our pastors, our congregation and our community.

Stephen Ministry can provide care for people with different types of needs such as: unemployment, relocation, severe financial setback, living with a degenerative or chronic disease, empty nest, parent support of an adult child, divorce, caring for an elderly or ill family member, or following the death of a loved one. These are only a few examples.

Stephen Ministers are members of St. Luke's who receive fifty hours of training before they are commissioned and assigned care receivers. They participate in monthly group supervision and continuing education.

If you are experiencing difficult times and would like a Stephen Minister to help, please contact Stephen Ministry Referrals Coordinators:

Rev. Shannon Dill (shannondill@slpres.org/770-393-1424 ext. 229)
or Dr. Laura Strange (jandlstrange@comcast.net/770-392-9284)

If you have a friend in need, have the person call or obtain permission to inquire on their behalf.

SOAP: Supporting Older Adults and the People who care for them

Every stage of life brings new challenges and members of the SOAP team are here with resources and experience to help answer questions like:

- ◆ What resources are available to help me care for my loved one at home?
- ◆ What should I look for in an assisted living facility?
- ◆ How do I get a break from my caregiving duties?
- ◆ What sort of planning can make it easier for loved ones to care for me if I get sick?

If you are an older adult or the caregiver of an aging parent or friend, the SOAP team invites you to think of us as you consider questions like those above. Or, if you have Older Adult or caregiving experience you are called to share with others, we invite you to join Jean Cronan, Ellie Goodwin, Dr. Laura Strange, Dr. Lou LaMotte, Mark Mason, Andrea Price, Rev. Shannon Dill and others on the SOAP team.

St. Luke's Perimeter Counseling Center

St. Luke's partners with the Care and Counseling Center of Georgia to provide the community with confidential counseling, pastoral care and education for individuals, couples and families at the Perimeter Counseling Center on the St. Luke's campus. Georgia Griffin, through CCCG, serves as the Pastoral Counselor in residence. The office is located near the Chapel with a private entrance. If you would like to know more, contact Georgia Griffin (404-636-1457 x 452) or one of the pastors.

Caring Opportunities through Deacon Care Teams

At St. Luke's, we believe that Congregational Care is a shared responsibility. Our church community is stronger when our pastors and staff, officers, and our entire membership is engaged together in caring for one another. We seek to achieve this through a variety of ministries, understanding that congregational care involves a wide range of circumstances, needs, and concerns.

Our Deacons each serve on teams that help to organize and implement a variety of caring ministries within our congregation which are described on the next three pages. Every member of St. Luke's is invited to be a part of the caring teams in ways that fit your gifts, talents and age ability. Please contact Beth Eisenmesser (beisenmesser@yahoo.com) or Shannon Dill (shannondill@slpres.org) for more information or you may contact the Deacon leader of a specific team whose contact information is listed on the following pages.

SERVE

Loving Care Team

Friends, if you're looking for ways to love and help others within the congregation, then you may be interested in joining the Loving Care Team. Loving Care is one of six Diaconate Committees and Teams. It is comprised of three separate, but interconnected sub-teams: Intercessory Prayer, Meals and Helping Hands. If you would like to know more and be involved, contact Wayne Radloff at rwradloff@aol.com.

Prayer Ministry

Intercessory prayer is simply praying for other people. Everyone is called to some form of intercessory prayer. An intercessor is someone who is especially called and equipped by God through the Holy Spirit to spend time in earnest prayer for others. If this might be of interest to you, please contact Rev. Shannon Dill (770-393-1424 ext. 229), Paula Barbin (678-297-9877 or barbin@fulton.k12.ga.us) or Paul Clay (404-226-6232 or paul.clay@comcast.net) to find out more about this important ministry.

Meal Ministry

Would you be willing to prepare and deliver a meal to congregational families who are dealing with significant life events (e.g., a loss, major surgery or the birth of a child)? If you feel called to do this, please contact Beth Collins Himes at (678-441-1789 or bcollinshimes@alumni.duke.edu). If you're in need of meal support, please contact your Deacon.

Helping Hands

This is a new attempt to match short term or emergent needs within the congregation with readily available resources. Could you assist someone in the congregation with your time and talent? Examples are setting up or assisting with a computer, driving a member to an appointment or meeting, or helping change light bulbs. If this might interest you, please contact Wayne Radloff (404-668-7647 or rwradloff@aol.com). If you have a need, please let your Deacon know and it will be forwarded to Helping Hands.

“Welcome to Worship” Team

This group shares Christ's love with each and every Sunday morning arrival by staffing greeters who offer warm smiles, friendly handshakes, and answers to questions about our church and its ministries. This group provides hospitality and an opportunity for fellowship by organizing continental breakfast each Sunday. Tom McKinney heads this committee. You can reach him at 770-396-3598 or mckinneyt@bellsouth.net.

Continental Breakfast

It's always great to share a Sunday morning breakfast treat with your friends at church! Each Sunday morning, special volunteers bring and set up a wonderful continental breakfast for us. You can help by signing up to bring the breakfast one Sunday. If you haven't done this before, it's an easy and great way to connect with old friends and make new ones. Everyone loves food! Reimbursement for providing the breakfast is available and encouraged - all we need is you to bring the yummys! Please consider helping us to keep this service going, and call either Jay Burton (jayburton@ballp.com) or Tom McGurk (tdmcurk@yahoo.com) for more information and to volunteer.

Greeters

Do you have a warm smile and friendly handshake to offer guests and members as they enter St. Luke's? Then we have a spot for you as a greeter. Contact Tom McKinney at 770-396-3598 or mckinneyt@bellsouth.net. Come join our team!

SERVE

Join Us

The “Join Us” group walks with individuals from their first visit to St. Luke’s, to attending an Inquirers’/New Members’ Class, then finally joining and becoming active members of the church. We provide loaves of fresh bread as welcome gifts for first-time guests at both Sunday worship services, communicate with each guest that we are delighted they chose to worship with us by sending information packets and recording subsequent visits, then meet with participants in the Inquirers’/New Members’ Class. Connecting new members with the St. Luke’s congregation, where together they will continue to know, serve and share Jesus Christ is our goal.

Bread for First Time Guests

Fresh bread for first time guests is baked by member Cindy Nunez, but if you would like to be involved with giving out the bread, please contact Beth Eisenmesser at 770-399-9940 or beisenmesser@yahoo.com

Member Connections Team

This group’s goal is to prayerfully create a visible, accessible and active resource for members of St. Luke’s to connect with other members of the congregation through the process of introduction.

This committee is open to anyone from the congregation who would like to be involved. Our immediate goal is to connect deacons with their flock members through the use of active congregation members who know a lot of people and can arrange introductions. Another goal is to get as involved with new members as much as possible to get them connected to people and to activities within the church. This committee will work closely with other committees within the session and the diaconate such as the Commitment Committee and the Small Groups Committee. Our long-term goal is to be a resource to connect members on many different levels, whether they be church related, social, spiritual, practical (such as people who can fix things) or educational. Please contact Leigh Ann Haertel at 770-449-5796 or leighannhaertel@yahoo.com.

Special Life Events

This group helps deacons respond to special events in members’ lives such as births, adoptions, baptisms, confirmations, and major anniversaries. Some of the things they are involved with:

- ◆ Recognizing births or adoptions with roses on the pulpit.
- ◆ Placing announcements of special life events in the bulletin.
- ◆ Coordinating the Red Rose Reception for new parents and their children. (January 8)
- ◆ Coordinating the involvement of deacons in baptisms.

You are invited to contact Kelly Sloan at 770-730-0371 or kellymsloan@yahoo.com or Jean Kammerer at 770-265-1897 or kammererj@bellsouth.net if you would like to become involved in this exciting ministry or if you have a special life event you would like to share with the church family.

Visiting Care Team & Homebound Communion

Are you unable to get out and about as easily as you used to? Does it cause you to miss the fellowship of your brothers and sisters in Christ? Might you or someone you know enjoy visits from friendly, smiling faces? Do you have a desire to go out and share time and companionship with others? Organized by the Diaconate, the Visiting Care Team provides fellowship, support, and opportunities for church involvement to members and friends who are unable to be present on the St. Luke’s campus by organizing visits by team members. A subgroup of the Visiting Care Team schedules homebound communion by trained Elders and Deacons to supplement, not replace, homebound communion by the pastoral staff. If you are interested in being a part of this deeply rewarding ministry, please contact Chris Alexander at 770-676-9254 or cjaalexander@aol.com.

SERVE

Mission and Outreach

Be Part of Local Outreach On the St. Luke's Campus

Blood Drive March 11, 8 a.m. to 1 p.m. in the Great Hall

St. Luke's participates in several blood drives during the year. There is always a need for folks to donate blood. It helps so many people! Contact Patsy Bradley (770-394-5383) if you plan to donate and don't forget to bring your I.D.

Buy Some, Share One is St. Luke's ongoing food drive to support local organizations including Community Action Center, Interfaith Outreach Home and Six Star Refugee Program, which provide food to their participants. We ask that you make and keep a resolution that every time you go to the grocery store, you pick up one extra non-perishable item and put it in the carts in the lobby. These will be emptied periodically as needed.

Community Action Center (CAC) and St. Vincent de Paul are our local ministry partners who offer support to people in the Sandy Springs/Dunwoody/Chamblee communities in need of financial, food, or other relief assistance. St. Luke's supports the partners through ongoing support (food, clothing, and financial contributions). There are also many on-going opportunities for volunteers at **CAC** throughout the year.

R.O.C.K. (Reaching Out Through Crocheting & Knitting) is a group of men and women, young and old, of varying skill levels (absolute beginners to experts) that meets on Wednesdays, 10 a.m. to 12 noon in the Parlor. We make prayer shawls, layette set for preemies, squares for blankets, and a variety of other outreach projects. Everyone is welcome!

Simple Way to Help - Baggies for the Homeless is a new outreach program which makes available packed sandwich bags with snacks and a card with contact information for local agencies that help the homeless that you can give out to folks when someone approaches you on the street asking for money or food. They are easy to make. Any questions? Contact Phil Brown at philbrown@slpres.org and he will get you started.

Be A Part of Local Outreach Around the Community

The Tartan Trot, 5k and 10k road races, serves as the Youth Ministry's major fundraiser. It is an amazing race! Check out www.TartanTrot.com for more information. Here's how you can help:



- ◆ **Sponsorship:** Your family, your friends, your business, your friends business, your laundromat/dry cleaners, your coffee shop, whoever you know, ask them to sponsor. There are various levels available. Get creative, maybe they have a service they can give to help us offset some of our costs. About half of our proceeds come from sponsors. They are vital for us. Youth, please get 10 people registered for the race. The money goes right back to you. All of you who have sponsored so far, thank you! We have over 140 sponsors! This is amazing! Forms are available in the lobby.
- ◆ **Volunteer:** It takes about 140 people to make the race happen. Are you one of those people? Pre-race help, pre-race dinner help, and race day help is needed. Many jobs will allow you to still run if you would like. Contact Allison Thornton at 770-804-9697 or aetrilt@bellsouth.net.
- ◆ **Pray:** Pray for the race, for the many hundreds of people who will come to our church, for the youth and adults who use this money to help others around the world. Pray for the organizations we partner with and the thousands of people they impact around the world. Pray for those in charge, for those who make many decisions for this event.
- ◆ **Run/Walk:** Register today at www.TartanTrot.com, www.active.com, Big Peach Running Company, or at church in person. Forms are also available in the lobby.
- ◆ **Boot Camp** for Tartan Trot runners is underway. Go to www.tartantrot.com for more information. See page 20.

SERVE

Be Part of Local Outreach (continued)

Interfaith Outreach Home (IOH) provides transitional housing for ten homeless families. The parents have classes on the third Thursday of each month and St. Luke's provides and delivers a meal for the families (approximately 10 adults and 15 children), on these occasions. We need meals for: February 16, March 15, and May 17. Reimbursement is budgeted for these meals. If you or your group would like to help, please contact Al Bridges at 770-394-6581. There is also sign-up sheet on the lobby bulletin board.

Six Star Refugee Partnership provides housing and supportive services to refugee families during their transition to self-reliance and advocates on behalf of the refugee community. Our current two families are from Burma/Myanmar. St. Luke's members serving on the Board of Directors are Kim Fadel, Bill Womack and Ellen Womack. St. Luke's members have helped by donating furniture, household items, and stocking the pantry for newly arriving families. Currently St. Luke's members are assisting with English Second Language, taking them to the farmer's market and doctor's appointments. To learn more, go to www.six-star-refugee.org or to volunteer, contact Ellen or Bill Womack (epwomack@bellsouth.net).

Journey or The Druid Hills Night Shelter provides transitional housing for about 26 men who are employed or actively seeking work. Our guests receive dinner, a safe night's sleep, a shower and breakfast. St. Luke's partners with this ministry by providing meals (fourth Sunday of the month), and by gifts of blankets, sheets, pillows and pillowcases, multi-vitamins, and laundry detergent. Volunteers are needed for January 22, April 22, May 20, June 24, and July 22. If you or your group would like to help, please contact Al Bridges at 770-394-6581 or sign up on the lobby bulletin board.

Be Part of Seasonal Outreach Opportunities

Habitat for Humanity Build #16 starts April 14th

St. Luke's is once again partnering with Dodd-Sterling United Methodist Church to build our 16th Habitat House. We will work on the house for eight Saturdays. Everyone is invited to help. For more information contact Daryl Moore (770-395-6278 or ddmoore@yahoo.com). Watch for further details.

Be Part of Mission Trips This Summer - YOUTH

VBS, June 11-14, All Ages, Cost: free to those who help

So it's not really a trip for youth to go on, but a local week of service for youth to participate in. We need all kinds of help this week sharing with the younger ones of our congregation. There is an opportunity for all youth to serve this week.

Mountain T.O.P., June 17-23, Age: 13 (by camp) and up, Cost: \$250

It is a week at camp with 120 of your favorite new friends serving the rural Cumberland Mountains of Tennessee. You can either work with building projects or day camp where you provide a week-long life-changing experience for the kids of this area. (www.mountain-top.org)

Guatemala Outreach, June 25-July 2, Age: High School through College: \$850

Work on reforestation projects in Guatemala, build a sustainable wood stove, and engage with some really awesome people. (www.air-guatemala.org)

Mexico/CPC, July 10-16 or 17-23, Age: Middle School and up, Cost: Air Fare to San Antonio

Intergenerational trip for ages middle school and up. Families are encouraged to go together. There will not be a dedicated "youth" week this summer, but that doesn't mean you can't go. If you want to go, we can probably work it out. We will build houses. (www.cpcmexico.org)

Massanetta Springs, July 17-20, Completed grades 6-8 by June 2011, Cost: around \$200

Middle School only conference in Virginia that includes fun times, great worship, small groups, energizers, games and all-out good times. (www.massanettasprings.org)

Montreat, July 22-28, Age: Entering 9th-graduated 12th grades, Cost: around \$250

High School only conference with about 1000+ others. We will stay in a house for a week of fun worship, small groups, and more fun. (www.montreat.org)

SERVE/SHARE

Scouts - CHILDREN & YOUTH

Boy Scout Troop 764 has 53 boys registered. Scout Sunday is planned for January 22. This is an active Troop with a number of spring and summer activities planned. There is a fundraiser planned later in the spring. Watch for details. For more information on the St. Luke's Boy Scout Troop #764, contact Brian LaRose, Scout Master, at brianhlarose@gmail.com or see the troop website at www.troop764.org.

Cub Pack 764 is growing! We have 36 boys from first to fifth grade registered for 2012, and we're grateful to St. Luke's for their continued support. Is your son looking for excitement and adventure (plus some great quality time with you)? Be a visitor at our next Pack meeting and see what Cub Scouting is all about! We meet the first week of each month from 6:30 - 7:30 p.m. in the Scout Hut. If you have questions, please contact Cub Master Brian LaRose (770-350-9835) or Peter Keohane (keohanepc@gmail.com).

Fellowship Groups - ADULTS

Young Adult Ministry

Breathing new life into this ministry is the goal for this year. We are looking for new ways of connecting us all together. If you would like to be part of this exciting new growth please let Phil Brown know.

During the year we still have much going on:

- ◆ **Service Opportunities** include Habitat for Humanity, Men's Night Shelter, and Mountain T.O.P. to name a few.
- ◆ **Sunday School:** adult classes abound or volunteer to teach little ones all the way to the high school classes.

Please join us whenever you can. For more information, contact Phil Brown at philbrown@slpres.org or 770-393-1424 ext. 238.

OWLS (Older, Wiser, Loving Seniors)

Our regular meeting date is the fourth Tuesday of the month, but is subject to change. Hope you can join us!

- ◆ **Tuesday, January 24, 11:30 a.m. to 1 p.m. in the Great Hall.** Cost for lunch is \$7 per person
Program: "Tasting Luncheon" with Joe Dabney local author of Low Country and Appalachian Cookbooks. Watch for sign-up sheet on the lobby bulletin board.
- ◆ **Sunday, February 26, provide a meal for the Druid Hills Men's Shelter.** We will fix a meal and take it. Watch for sign-up sheet to help. Ellen Massey will head this up.
- ◆ **Tuesday, February 28, 11:30 a.m. to 1 p.m. in the Great Hall.** Cost for lunch is \$7 per person.
Program: "Bingo Game Day." Watch for sign-up sheet on the lobby bulletin board.
- ◆ **Tuesday, March 27, 11:30 a.m. to 1 p.m. in the Great Hall.** Cost: \$7 per person
Program: **Pizza and Palms Party.** We will make reed crosses for the congregation of St. Luke's to have on Palm Sunday.
- ◆ **Tuesday, April 24, Trip to see "Passages" at the Perimeter Expo Center.** Cost for the exhibit is \$10 to be collected that day; Lunch is on your own at The Oliver Garden.
Program: "Passages" - largest private collection of biblical texts and artifacts.
- ◆ **Tuesday, May 22, 11:30 a.m. to 1 p.m. in the Great Hall.** Cost is \$7 per person.
Program: **Diane Rooks, Master Storyteller.**
- ◆ **Sunday, June 10, following the 11 a.m. worship service**
Program: **Annual end-of-program year luncheon** will be held at a local restaurant. Great opportunity to relax and enjoy good eats and good friends. Lunch is on your own.

For more information about the O.W.L.S., please feel free to contact Claydene Dunlap (770-396-5861 or csdjed@bellsouth.net) or check the website (www.slpres.org).

SHARE

Men's Ministry

Men's Breakfast (second Saturday of the month, August-May) is held at 8 a.m. in the Great Hall or the Session Room. To RSVP for any Men's breakfast, contact Daryl Moore at 678-441-6203 or ddmoore@yahoo.com. Upcoming Dates: **1/14** - Georgia Legislative Review; **2/11** - Martial Arts—Making the Right Moves; **3/10** – Wes Durham, sports commentator; **4/14** - Gathering with Dodd-Sterling & Habitat Build #16; **5/12** - Perspective from Councilman Terry Nall and served with Brid's famous strawberry shortcake!

Men's Golf Fellowship meets the first Saturday of the month from March through November for golf and fellowship. Sign-up at st-lukes-golf@att.net and provide an e-mail address and your cell phone number. For more information, please contact Dave Elkins at 770-458-6415 or d.elkins@att.net. Fore!

Fellowship Events

Sunday, January 29 - Scottish Heritage

Scottish Heritage Reception in the Great Hall following the 11 a.m. Worship Service

The congregation is asked to bring finger friendly desserts or shortbread to share.

March 25 - Church-wide luncheon followed by Easter Egg Hunt, following 11 a.m. worship service. The church will provide fried chicken and drinks. The congregation is asked to bring side dishes to share.

April 22 - Youth Sunday and church-wide hot dog cookout on the grounds. Watch for details.

July 4th - Water Brigade for Dunwoody Fourth of July Parade. Help to provide water for those in the Dunwoody Parade.

July - Summer Sundaes is where the church family gets together every Sunday evening for singing, sharing a short message and eating lots of ice cream.

Faith & Film Nights

Faith & Film Night is an informal opportunity for adults of all ages to get together and explore their own faith through the lens of film, and the theological perspective and claims made within today's film culture.

The group meets the third Friday of each month. Dinner is served at 7 p.m. and the movie starts around 7:45 p.m., in the Youth Center, Room 207.

If you plan to attend, please RSVP to Josh and Cindy Nunez at nunez_cd@gmail.com or give them a call at 770-451-9545 if you would like to help with food.

Upcoming movies: Check out the poster on the main lobby bulletin board for more information about each movie. We have a great line up of movies to see and discuss.



January 20



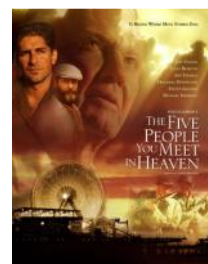
February 17



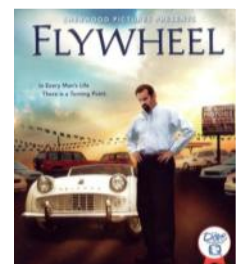
March 16



April 20



May 18



June 15

STAFF

Rev. Dr. Jason Whitener
Pastor
770-393-1424 ext. 223
jasonwhitener@slpres.org

Rev. Shannon Dill
Associate Pastor
770-393-1424 ext. 229
shannondill@slpres.org

Rev. Phil Brown
Associate Pastor
770-393-1424 ext. 238
philbrown@slpres.org

Catherine Anne Thomas
Director of Children's Ministries
770-393-1424 ext. 228
cathomas@slpres.org

Clair Maxwell
Director of Music & Organist
770-393-1424 ext. 227
clairmaxwell@slpres.org

Carol Perry
Director, Little Saints Preschool
& Kindergarten
770-393-1424 ext. 240
carolperry@slpres.org

Shirley Carrier
Administrative Assistant
770-393-1424 ext. 225
shirleycarrier@slpres.org

Liz Catlett
Administrative Assistant
770-393-1424 ext. 236
lizcatlett@slpres.org

Sally Hawkins/Betsy Turner
Receptionists
sallyhawkins@slpres.org
betsyturner@slpres.org
770-393-1424

Roby Price
Facilities Manager
robypri@slpres.org
770-393-1424 ext. 244

Brittany Harrold
Intern for Children & Youth
brittanyharrold@slpres.org
770-393-1424 ext. 234

Sunday mornings

**8:30 a.m. Worship
with Communion in
the Chapel**

**9:30 a.m. Sunday
School for all ages**

**11:00 a.m. Worship
service in the
Sanctuary**

**www.slpres.org
770-393-1424**

Health, Wellness, and Recreation ~ Adults

ANAD Support Group

The ANAD Support Group meets at St. Luke's on Saturdays from 10-11 a.m., in Room 212, and you can still join the group. This Eating Disorders Support Group is for youth, men and women struggling with anorexia, bulimia, and compulsive overeating as well as families and friends wishing to be involved in the recovery process. This group will be co-facilitated by a registered dietician and a counselor who specializes in the treatment of eating disorders. Questions? Contact Page Love, RD, at 770-395-7331.

Men's Pick-up Basketball, Tuesday and Thursday, 7:30 - 9:30 p.m. Just for fun and a little exercise! Schedule does vary during the year. Contact George Stewart (stewartga@comcast.net) for more information.

Posture Perfect – Monday, 12:30 - 1:30 p.m., \$5 per class. This class consists of gentle stretches and exercises designed to bring joint alignment to alleviate pain and maintain the body structural integrity.

Tartan Trot Challenge Training Group is underway to get you in shape for the Tartan Trot on Saturday, January 28. Come join your friends and train! Instructors from the American Boot Camp Company and our own Rob Price will lead the runs at 7:30 a.m. on Saturdays. All fitness levels are welcome. For more information go to www.tartantrot.com. If you are interested in child care during the Saturday runs, please let Rob know as soon as possible at 770-913-0566 or jennyandrob@bellsouth.net.

Job Seekers Support Group

Jobs & Java

This group of St. Luke's men and women meets every other Tuesday at noon at the Starbucks in Dunwoody Village for networking and support. For more information, please contact Louise Lewis (LewisLouise@bellsouth.net) or Jared Elliot (jared.elliott@att.net).

St. Luke's
PRESBYTERIAN CHURCH PC (USA)

1978 Mount Vernon Road
Dunwoody, GA 30338-4617