

Sunday's Palms Are Wednesday's Ashes



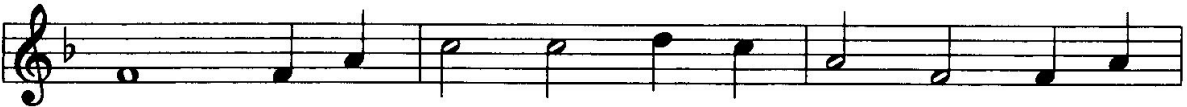
1. *Sun-day's palms are Wednes-day's ash - es as an -
 2. We have failed to love our neigh - bors, their of -
 3. We are hast - y to judge oth - ers, blind to



oth - er Lent be - gins; thus we kneel be - fore our
 fenc - es to for - give, have not lis - tened to their
 proof of hu - man need; and our lack of un - der -



Mak - er in con - tri - tion for our
 trou - bles, nor have cared just how they
 stand - ing dem - on - strates our in - ner



sins. We have marred bap - tis - mal pledg - es, in re -
 live, we are jeal - ous, proud, im - pa - tient, lov - ing
 greed; we have wast - ed earth's re - sourc - es; want and



bel - lion gone a - stray; now, re - turn - ing, seek for -
 o - ver - much our things; may the yield - ing of our
 suf - fering we've ig - nored; come and cleanse us, then re -



give - ness; grant us par - don, God, this day!
 fail - ings be our Len - ten of - fer - ings.
 store us; make new hearts with - in us, Lord!

**The first line of the hymn recalls the custom of burning remaining palm leaves of the previous year to form the ashes for this observance.*

WORDS: Rae E. Whitney
 MUSIC: Attr. to B. F. White

BEACH SPRING
 87.87 D

Words © 1991 Selah Publishing Co., Inc.